

# REGIONAL ATTRACTIONS & DINING INFORMATION

Terrace Bay ♦ Schreiber ♦ Rosspoint ♦ Jackfish



Simcoe Plaza in Terrace Bay



Schreiber Beach



Rosspoint Harbour



For more information, please visit or contact:

[www.terracebay.ca](http://www.terracebay.ca)

Email: [tourism@terracebay.ca](mailto:tourism@terracebay.ca)

Phone: 1-800-968-8616 (toll-free)

[www.schreiber.ca](http://www.schreiber.ca)

Phone: 1-807-824-4638

[www.rossport.ca](http://www.rossport.ca)



**Aguasabon Falls**



**Terrace Bay Drag Fest**



**Kayaking Lake Superior's Shores**



**Terrace Bay Lighthouse**



**Slate Islands Lighthouse**



**Terrace Bay Beach**



**Simcoe Plaza**



**Simcoe Plaza**

# TABLE OF CONTENTS

## MAPS

STREET MAP OF TERRACE BAY WITH RESTAURANTS .....	3
STREET MAP OF SCHREIBER WITH RESTAURANTS .....	3
REGIONAL MAP.....	4
STREET MAP OF ROSSPORT WITH RESTAURANTS .....	4

CHARTERS AND OUTFITTERS FOR THE REGION.....	5
---	---

## ATTRACTIONS

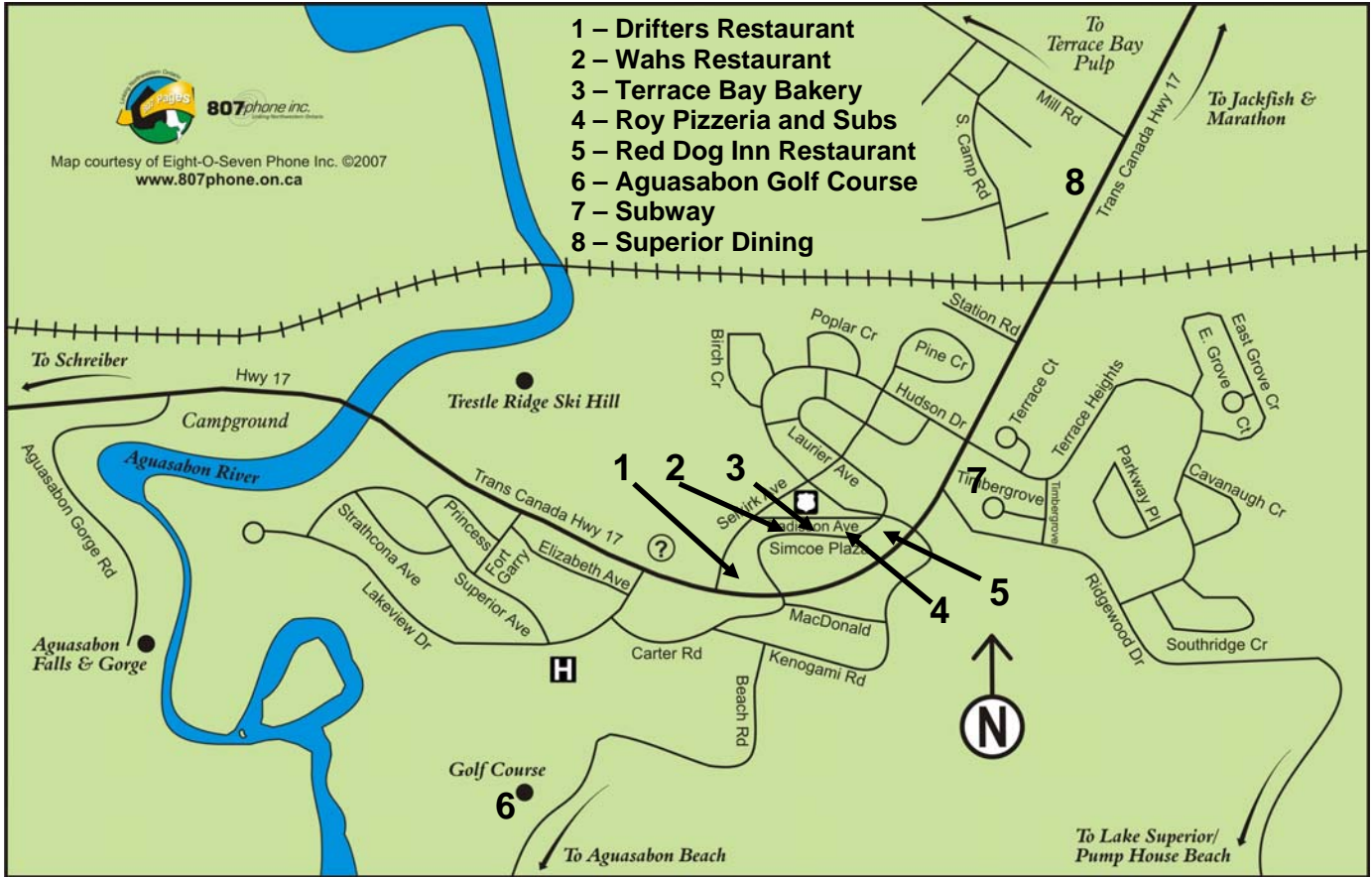
AGUASABON FALLS & GORGE.....	6
AGUASABON GOLF COURSE .....	6
BATTLE ISLAND LIGHTHOUSE .....	7
CASQUE ISLES HIKING TRAIL.....	7
DRAGFEST.....	8
GHOST TOWN OF JACKFISH.....	8
GUNILDA.....	9
LAST SPIKE AT NOSLO MONUMENT .....	9
MOUNT GWYNNE.....	10
NEYS PROVINCIAL PARK.....	10
RAINBOW FALLS PROVINCIAL PARK.....	11
ROSSPORT CABOOSE MUSEUM .....	12
SCHREIBER BEACH.....	12
SCHREIBER RAILWAY HERITAGE AND FESTIVAL SITE.....	12
SLATE ISLANDS .....	13
STEEL RIVER.....	14
TERRACE BAY BEACH .....	14
TERRACE BAY LIGHTHOUSE & DOWNTOWN.....	15
TRESTLE RIDGE SKI HILL .....	15
WHITESAND LAKE .....	15

REGIONAL EVENTS.....	16
----------------------	----

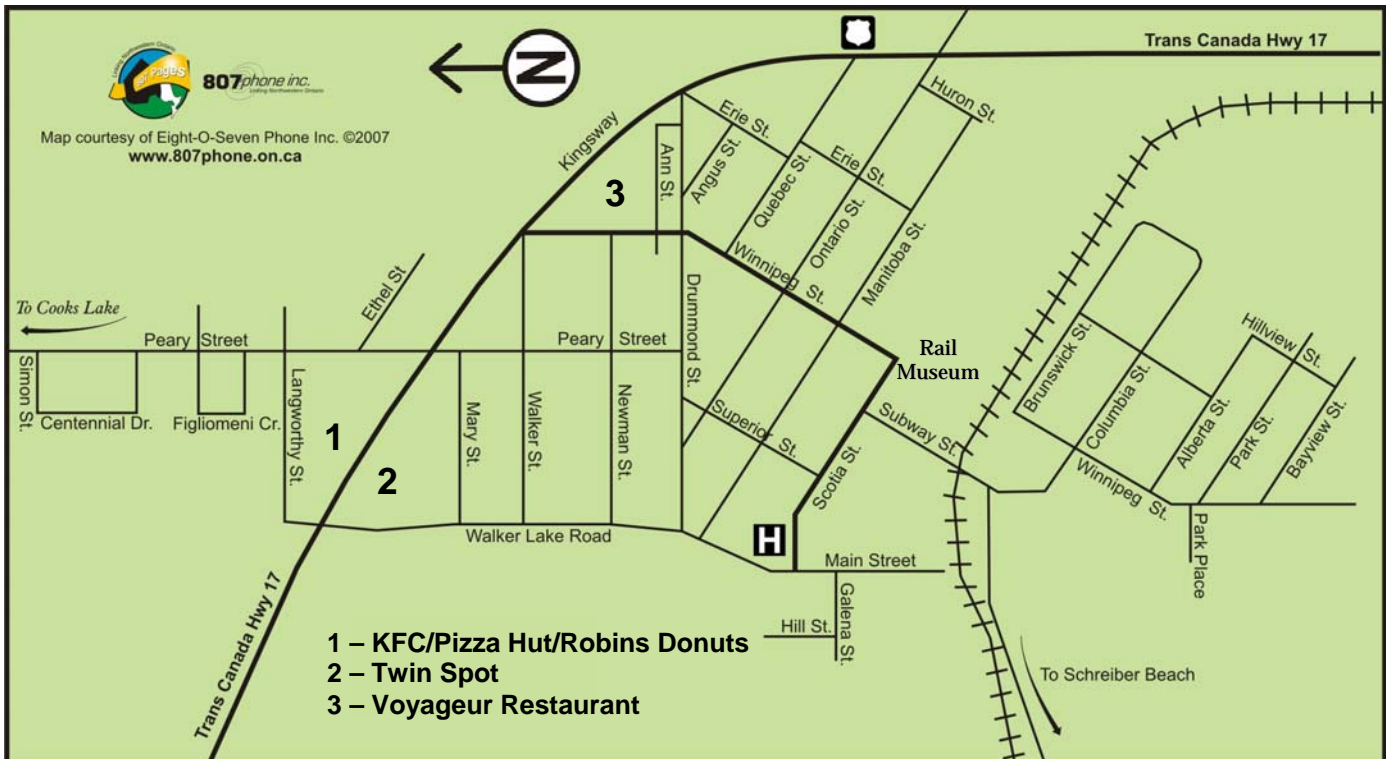
## DINING

AGUASABON CLUBHOUSE.....	18
DRIFTERS RESTAURANT .....	19
RED DOG INN AND RESTAURANT .....	20
ROY PIZZERIA & SUBS .....	21
SUBWAY .....	22
SUPERIOR DINING .....	23
TERRACE BAY BAKERY .....	24
WAH'S RESTAURANT .....	25
KFC/PIZZA HUT/ROBIN'S DONUTS .....	26
TWIN SPOT RESTAURANT .....	27
VOYAGEUR RESTAURANT.....	28
SERENDIPITY GARDENS.....	29

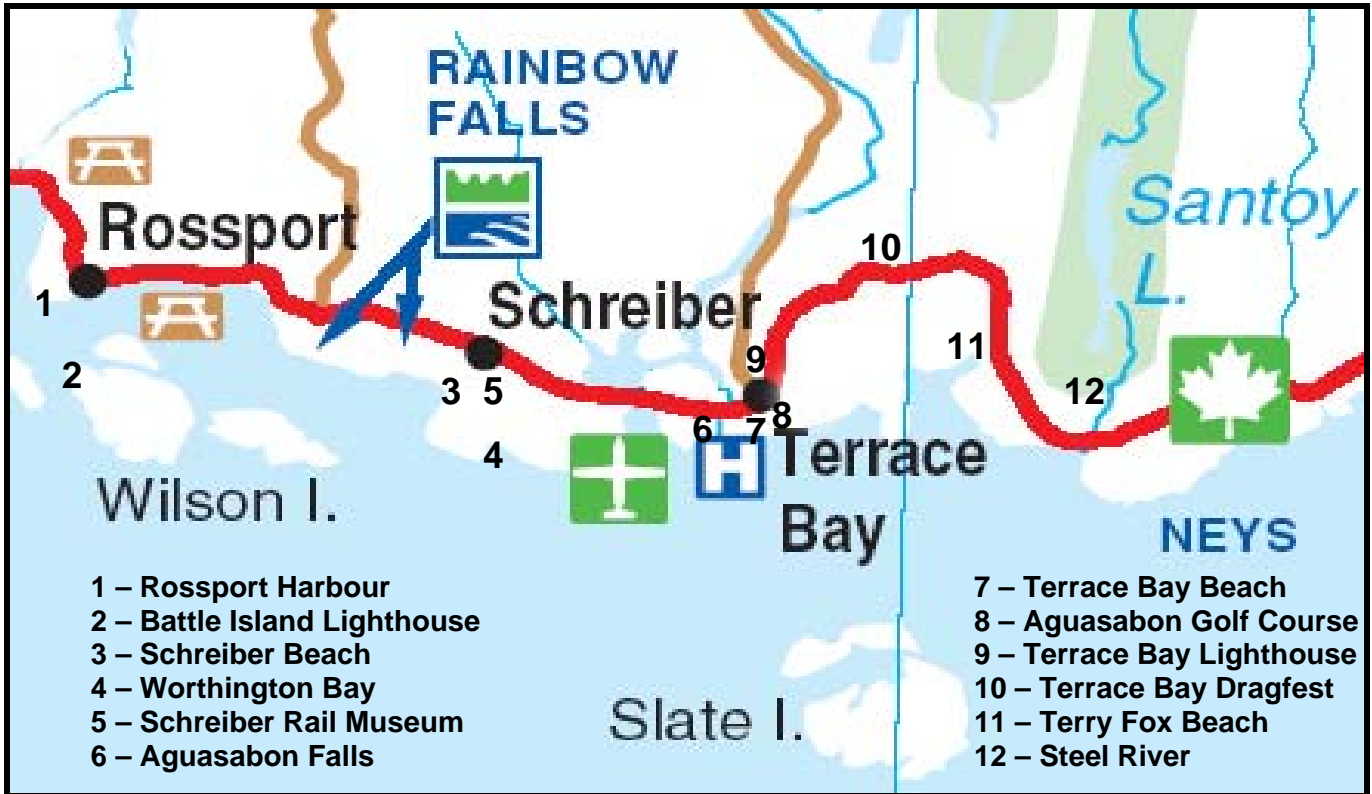
## STREET MAP OF TERRACE BAY WITH RESTAURANTS



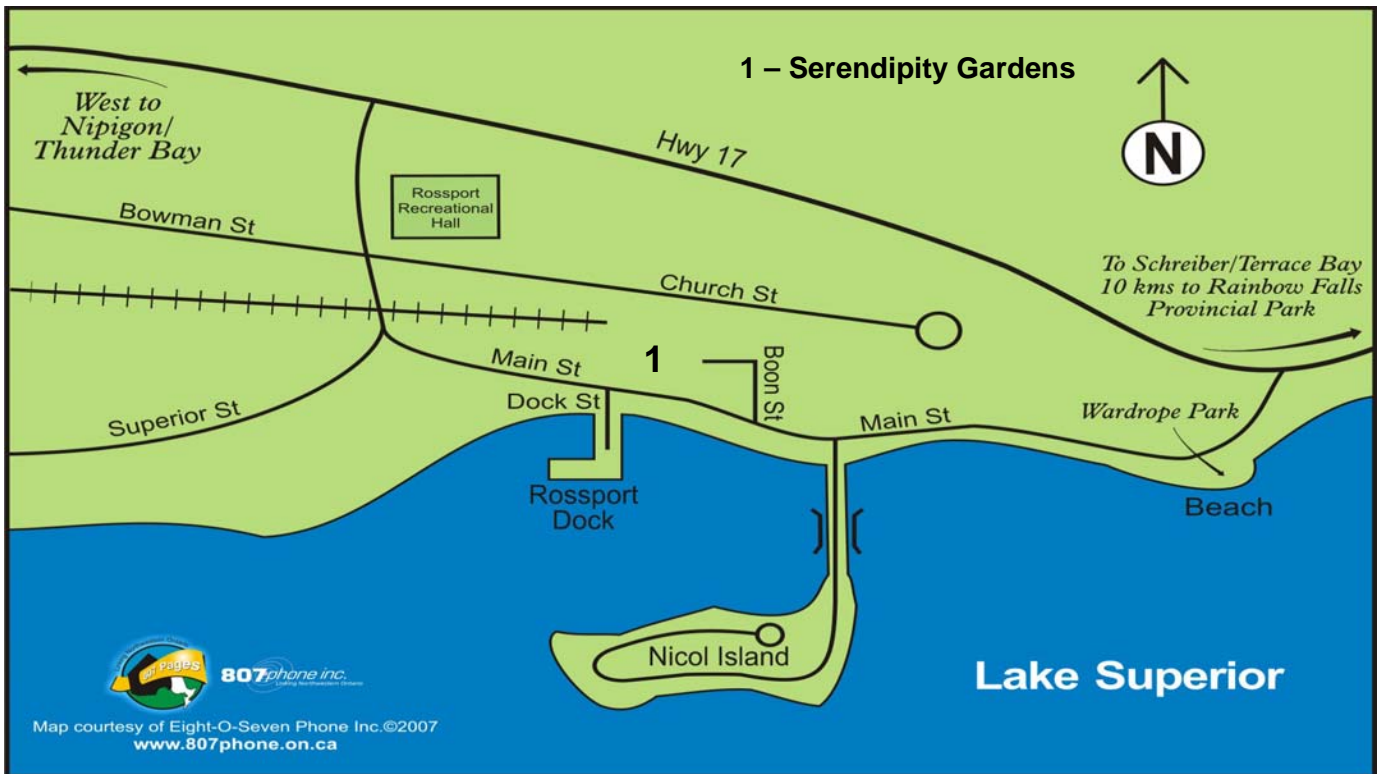
## STREET MAP OF SCHREIBER WITH RESTAURANTS



## REGIONAL MAP



## STREET MAP OF ROSSPORT WITH RESTAURANTS



## Charters and Outfitters for the Region



### Northern Phin Charters

Phone: 1-807-825-9685, Gary Salesse  
 Email: [info@northerncharters.ca](mailto:info@northerncharters.ca)  
 Website: [www.northerncharters.ca](http://www.northerncharters.ca)



### Bluebird Charter Boat

Phone: 1-807-824-3353, Côme Castonguay  
 Email: [info@bluebirdcharterboat.com](mailto:info@bluebirdcharterboat.com)  
 Website: [www.bluebirdcharterboat.com](http://www.bluebirdcharterboat.com)



### Superior Outfitters Coastal Kayaking

Services - kayaking and canoe adventures  
 Phone: 1-807-824-3314, Dave Tamblyn  
 Email: [dtamblyn@nwconx.net](mailto:dtamblyn@nwconx.net)  
 Website: [www.superioroutfitters.on.ca](http://www.superioroutfitters.on.ca)



### Discovery Charters

Phone: 1-807-824-3323, Paul Turpin  
 Email: [discoverypb@yahoo.ca](mailto:discoverypb@yahoo.ca)  
 Website: [www.discoverycharters.ca](http://www.discoverycharters.ca)



### Northern Woods Lodge

Phone: 1-807-937-6584 (winter)  
 Phone: 1-613-482-8115 (summer)  
 Hosts Terry & Lorna Wood  
 Email: [lmwood@xplornet.com](mailto:lmwood@xplornet.com)  
 Website: [www.northernwoodslodge.com](http://www.northernwoodslodge.com)



**Please note:** it is the responsibility of the customer to ensure any of the outlined charter, lodge or kayaking services have up-to-date licensing and insurance information as the Township of Terrace Bay or Township of Schreiber do not certify tourist outfitters in any way.

## AGUASABON FALLS & GORGE

The Aguasabon Falls and Gorge are located one km west of the Tourist Information Center in Terrace Bay. From Highway 17, follow the signs to a parking lot at the falls. From the parking lot there is a boardwalk out to a viewing platform overlooking the gorge and the spectacular 100 foot falls that are flowing into the gorge from the left. The river follows fractures in the bedrock that are approximately 2.6 billion years old, and the exposed rock located on the face of the Gorge is called “granodiorite.” Enjoy the rugged beauty of the North Shore.



The Aguasabon Falls and Gorge features a large turn-around parking lot, picnic tables and washrooms. The boardwalk to the observation deck is wheelchair accessible and serves as an entrance point to the 52 km Casque Isles Hiking Trail.



## AGUASABON GOLF COURSE ([www.terracebaygolf.ca](http://www.terracebaygolf.ca))



Tee off at your convenience on this challenging nine hole layout featuring striking scenery that borders the winding Aguasabon River and skirts the Terrace Bay beach. Tee off times are not required as there is usually no more than a 10-15 minute wait, however out of town visitors should call ahead to ensure a tournament or event is not scheduled.

Following a round of golf, you can relax in the clubhouse, which offers a full service restaurant, licensed bar, basic pro shop, and elevated patio deck with a view of the course and Lake Superior.



The course also features a driving range, putting green, powered gas cart rentals, golf club and pull cart rentals, and access to the Gold Association of Ontario (GAO) computerized Handicap system. Some of the things that make this course special include: affordable membership and green fees, quick playing times (9 holes less than 2 hours), incredible scenic views, and easy access to from local hotels.

## BATTLE ISLAND LIGHTHOUSE



The Battle Island Lighthouse is located near Rossport. It was first established in 1877, although the present tower was built in 1911. It has a focal plane of 36 meters (118 feet) and has three white flashes separated by 4 seconds, every 24 seconds. It consists of a 13 meter (43 foot) round concrete tower with lantern and gallery and the building is painted red and white.



Interestingly, the Battle Island Lighthouse was among the last of the Great Lakes lighthouses to be automated. It is currently used as an active seasonal aid to navigation. The keeper's house is occupied by a resident caretaker who is the former keeper and he sometimes allows visitors to tour the light station.

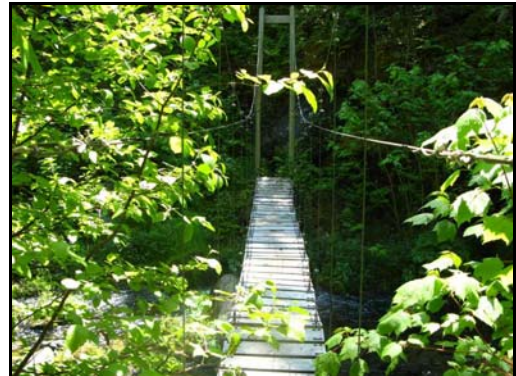
The lighthouse is accessible only by boat and tours are available.

## CASQUE ISLES HIKING TRAIL

The Casque Isles Hiking Trail is a 52km hiking trail that runs from Terrace Bay, through Schreiber and into Rossport. It is part of a larger trail network known as the Voyageur Trail. The Casque Isles trail is well signed, well groomed and offers many campsites to accommodate the numerous visitors who are attracted to the rugged beauty of Lake Superior.

The trail follows the shoreline of Lake Superior, hopping from bay to bay, and is divided into five units, each with its own unique wilderness experience and access point from Highway 17. These units vary in hiking time and difficulty so that both the advanced and amateur hikers can enjoy the scenery. The Casque Isles Hiking Club organizes guided hikes, trail blazing parties, and general meetings to discuss ideas and issues.

If you would like more information, contact the Terrace Bay Tourist Information Centre, or visit the webpage at [www.terracebay.ca/casque](http://www.terracebay.ca/casque).





## **DRAGFEST ([www.dragfest.ca](http://www.dragfest.ca))**

The Terrace Bay Dragfest was started in 1998 by members of Superior Classics Car Club. These car enthusiasts wanted to bring a high quality, high access, low cost and professionally operated drag race to the area. Since the first event almost ten years ago, the Dragfest has become highly successful with over 300 participants taking part in the weekend-long event. Held each August long weekend at the Terrace Bay Airport, it features such vehicle categories as Street, Sportsman, Super Street, Pro, Super Pro, Cycles and Sleds and Junior Dragsters. There is something for everyone to enjoy! The Dragfest is a must-see event for anyone who craves speed and thrills.



Spectators come from all over Canada and the United States to watch the cars and the population of Terrace Bay has been known to exceed 10,000 during this weekend. In addition to the races, a car show and dance are also held. Visitors and residents are encouraged to come and experience the excitement of the largest motor sports event in Northwestern Ontario. For more information, visit [www.dragfest.ca](http://www.dragfest.ca).



## **GHOST TOWN OF JACKFISH**

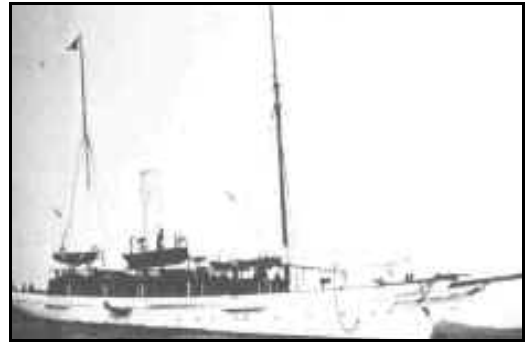


The ghost town of Jackfish is located off Highway 17, just 20 miles east of Terrace Bay. There are many weather-beaten houses and fallen foundations left from the once prosperous town. The trestle docks have long been gone, the C.P.R. churches and schools have all been dismantled and the famous hotel demolished. To get there, drive east from Terrace Bay and turn right onto a gravel road. There is a yellow sign on the back of a stop sign reading “Jackfish Siding.”

Follow this road straight to an open area parallel to railway tracks and follow the road along the end of an open area to the right. At the far edge of the open area, the road curves left towards the railway track. Park here. Walk along the tracks west to the old town of Jackfish. The walk should take 15 minutes.

## **GUNILDA**

Although Lake Superior is home to many shipwrecks, the sinking of the Gunilda is the most famous example in our area. The Gunilda was a 195-foot steam yacht owned by oil baron William L. Harkness who was one of the world's wealthiest men at the time. In 1911, Harkness took some friends and family for a cruise up the Great Lakes with plans to fish for speckled trout in Lake Nipigon. En route, the vessel drew stares of admiration for her fine mahogany woodwork and gold scrollwork on her immaculate white hull.



Harkness put in at Jackfish Bay to inquire about renting a local guide to navigate the channel but balked at the fee. Sure that his crew of 20 could ease the steel-hulled yacht safely through the final leg of the journey to the fishing grounds, he ordered his captain to “carry on!” At his command, the majestic vessel steamed across the bay on the foggy morning of August 29 on what would be the Gunilda’s final journey.

On August 31, the Gunilda slammed into McGarvey Shoal, just 8 km from Rosspport and sank 265 feet near the community. Today, it sits upright facing Rosspport Harbour and is now protected by Heritage Shipwreck. Divers with the proper certification and training are rewarded with pristine views of a world class yacht. Guests can also visit the Gunilda gift shop in the community of Rosspport which sells souvenirs and provides information on the wreck.

## **LAST SPIKE AT NOSLO MONUMENT**



The history of the railroad is intertwined with that of Terrace Bay and Schreiber and is perhaps no more evident than at Noslo, just west of Jackfish. After much debate, the bill to build a railway across Canada was signed on February 15, 1881. William C. Van Horne was hired as the General Manager. Some members of Parliament fought to have the Lake Superior section go through the American side; however, Van Horne convinced them to create an all-Canadian line.

The last spike driven between Montreal and Winnipeg was at Noslo on May 16, 1885. Colonel Oswald of the Montreal Light infantry hammered home the last spike. Oswald was on the troop train that was traveling home from an armed rebellion in Saskatchewan. A major factor in the completion of the Lake Superior section of the railway was due to the necessity of getting militia forces from the east to the Northwest Rebellion as quickly as possible.

On May 16, 1935, a few of the original workers and veterans of the C.P.R. re-enacted the drive of the last spike at Noslo. A stone and cement monument reads: Driving the Last Spike between Montreal & Winnipeg May 16th, 1885 was re-enacted here by veterans and some original participants May 16th, 1935. This monument was built on the spot to commemorate the historic occasion.

## **MOUNT GWYNNE**



Mount Gwynne is located on the Schreiber Point Section of the Casque Isles Hiking Trail and is the highest point in the area. It sits 260 km above Lake Superior and boasts a spectacular 360° panoramic view of the forested hillsides and the vast expanse of the lake. The Schreiber Point Section has a trail time of 6.4 km and a section time of 12.2 km or 3 – 5 hours. Visitors can gain access to this section of the trail by following Worthington Bay Road or Winnipeg Street and Isbester Drive in Schreiber. The view from the summit of Mount Gwynne is well worth the hike!

## **NEYS PROVINCIAL PARK**

Neys Provincial Park is located 50 km East of Terrace Bay, on Highway 17. It is a Natural Environment Class park and includes the historic Coldwell Peninsula as well as the surrounding island system. The ghost village of Coldwell, which lies just outside the eastern boundary of the park, was home to an old railway and fishing community until the 1960s. All that remains of the village now are a few foundations, shipwrecks in the harbour and a cemetery.



The history of Neys also includes the establishment of a Prisoner of War camp, in which hundreds of German inmates lived. These men were imprisoned from 1941 to 1946. At the end of the war, Neys became a processing camp for all POW detained in Northwestern Ontario and was then turned into a minimum security work camp for prisoners from the Thunder Bay area. The camp was dismantled in 1954. Visitors can view a model of the camp at the Visitor Centre.

The park features weathered and rounded gray or pink rock along the western side of the Coldwell Peninsula. In fact, Neys is home to one of the hardest and rarest mineral complexes in North America, the Coldwell Alkalic Complex, which formed over 1 billion years ago when magma chambers formed beneath the surface, causing surface swelling to occur. Eventually, the swelling turned into an active volcano! Today, the once hot magma chamber is exposed surface rock on the northern shore of Lake Superior. The park has an interpretive trail (Under the Volcano Trail) with detailed information plaques that explain the process with more detail.

The park has four campgrounds providing 144 campsites (61 with electricity). Toilets, water taps and firewood are available at each campground along with a centrally located comfort station equipped with showers and laundry facilities. Popular activities at Neys include hiking, boating, fishing, swimming, canoeing/kayaking & wildlife viewing. There is much to see and do at Neys Provincial Park. For more information, phone (807) 229-1624.



## RAINBOW FALLS PROVINCIAL PARK

Rainbow Falls Provincial Park is located on Highway 17, 26 kilometers west of Terrace Bay. Visitors have two sites to choose from; Rainbow Falls, which is located on Whitesand Lake, and Rosspport campground. The former includes 113 tent and trailer sites, 28 of which have electrical hookup, while Rosspport has an additional 40 sites, with 16 including electricity. The park is named for the rainbows that often rise from the glittering cascades that fall down the rocky steps from Whitesand Lake to the Whitesand River, which also lie within the park's boundaries.

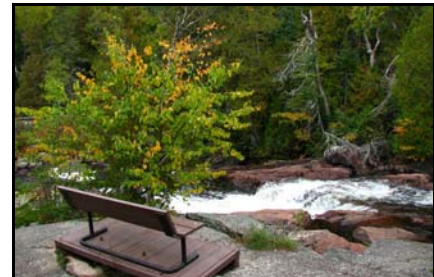


Rainbow Falls is a surprise. The falls don't begin and end all at once, but rather the erratic jointing of the bedrock has caused the river to run over a number of ledges and drop in a series of cascades rather than one large fall. Furthermore, the falls look pink, as the water drops over the reddest of granites. Masses of lichen turn the same pink bedrock gray.

Wildlife found within the park includes hares, chipmunks and squirrels, as well as the occasional appearance of deer, moose and black bear. Grouse and great blue herons also make their home in the park. Visitors are encouraged to try to identify the flora and fauna of the area.

For the adventurous visitor, there are three trails to explore within the park, as well as a segment of the larger Voyageur Hiking Trail. The Rainbow Falls Trail is a self-guiding 11/2 mile trail which follows the Whitesand River before crossing the falls. Further on, there are signs for the Casque Isles section of the Voyageur Hiking Trail., which winds along the shores of Superior, from Terrace Bay to Rosspport. The second trail is the Back 40 Trail, which is rated as the most challenging of the park's trails. It is an 11/2 mile climb that reveals grand vistas of the two lakes and surrounding country. Finally, the Superior Trail begins with a series of high, rocky steps that terminate on a flat slab of Canadian Shield. Here are terrific views of Lake Superior and the surrounding hills. The trail winds over this rocky stretch before funneling into a spruce forest.

Canoeing is another popular activity at the park. Whitesand Lake has sand beaches for swimming as well as a boat launch. Visitors can rent canoes and paddle boats from the park for a day of paddling or pedaling. Whitesand is home to good populations of smallmouth bass, while the Whitesand River is the place for rainbow and speckled trout in spring and steelhead during the fall run.



Rainbow Falls Provincial Park runs a small Natural Heritage Education program with a small visitor centre on the beach as well as an interpretive program being offered during the summer months. The park's gates are shut during the winter, but skiers can tackle the campground roads that double as cross-country trails. For more information, phone (807) 824-2298.

## **ROSSPORT CABOOSE MUSEUM**

Railway enthusiasts and people of all ages will enjoy the Caboose Museum located on Main Street in downtown Rossport. The museum is housed in a re-furbished rail car and features artifacts and photos showing the history of the community, with particular emphasis on commercial fishing and the C.P.R. The museum is open July and August from 11 a.m. to 6 p.m. daily except Mondays and Tuesdays. For more information, contact (807) 824-3321.

## **SCHREIBER BEACH**

Schreiber Beach is a must see for tourists who prefer a more relaxing pace. Lake Superior's sandy beaches provide the perfect opportunity for swimming, picnicking or hiking. Stop for a rest in Schreiber's beautiful gazebo. To find this secretive beach, ask a local or proceed to the downtown area, pass through the CPR underpass and turn right immediately following the underpass.



For those visitors interested in geology, what is possibly North America's most diverse, best preserved and internationally known collection of micro-fossils within Precambrian rock is found in the Schreiber Channel. This nature reserve is located just southwest of Schreiber. As one hikes along the shore of Lake Superior, one comes across a group of unusual concentric rings embedded in the rock. The rings vary in colour and size, with the largest more than three feet in diameter. They are clearly visible over a couple hundred square yards of bedrock that slopes down to the lake. It is not readily apparent what caused these intriguing circles, or stromatolites, in the rock. Schreiber Beach also provides access to Mount Gwynne through a rugged 2-4 hour hike that provides those successful with a breath-taking 360° view of the area.

## **SCHREIBER RAILWAY HERITAGE AND FESTIVAL SITE**



Schreiber is home to the Railway Heritage and Festival site that highlights the town's background as the oldest railway community on the North Shore of Lake Superior. It builds on the history and culture both of Schreiber and the Canadian Pacific Railway. Schreiber was first founded in the 1880s as a railway construction camp. Initially called Isbester's Landing, the town later was renamed after a railway engineer, Sir Collingwood Schreiber, and it became a booming terminal for C.P.R.

Subsequently, the area became home to hundreds of immigrants from Southern Italy, whose descendants remain there today. It is a must see for all railway enthusiasts and other visitors who are interested in the past. The museum is seasonal and is open in the summer months.

## SLATE ISLANDS



*The Slate Islands Lighthouse is the tallest on Lake Superior standing 224 feet above sea level*

The Slate Islands is one of the jewels of the North Shore of Lake Superior! It is a provincial park that is made up of two main islands, five minor islands and numerous islets located 11 km across Lake Superior from the Terrace Bay docks. The islands cover 36 square kms and are accessible by boat or plane, usually from Terrace Bay or Rosspport. The two largest islands, Patterson and Mortimer, surround protected waters, coves, bays and smaller islands. The islands are populated by a variety of species, most notably, the concentrated presence of woodland caribou, whose ancestors crossed from the mainland on winter ice in 1907. According to the Ontario Ministry of Natural Resources, it is the largest known unpredated herd of this species. Other mammals found on the islands include beaver, muskrat, snowshoe hare, short-tailed weasel, red-backed vole, and red fox.



The islands are believed to have formed over a billion years ago when a huge asteroid smashed into the earth. They are not made of slate, but mainly of metamorphosed, igneous rock and rise to nearly 400 feet, 122 m above lake level. The meteor strike has left the Slates with a 10 m long shattercone, which is believed to be the largest in the world. Additionally, the glacial effects and pounding waves of Lake Superior have made the area rich in valuable and accessible minerals.

A lighthouse was built on Patterson Island in 1903, to help ships locate the harbour at the nearby town of Jackfish, Ontario. In 1985, the Slate Islands were protected as an Ontario provincial park. There are no facilities and the islands' remoteness is enforced by almost 9 km of water and its distance from any large communities. It is frequented by naturalists, fishing parties, sailors exploring the Great Lake, and recently by an increasing number of sea kayaking parties.

To visit the Slate Islands, contact one of the local charters or outfitters in this document.

## STEEL RIVER

The Steel River is located twenty-four kms east of Terrace Bay, off Highway 17, above Lake Superior's north shore. This river area consists of long, narrow lakes, rugged cliffs, ravines, swamps, ponds, oxbow lakes and a 20-meter waterfall. The waterway is home to a variety of Northern Ontario plant and animal communities, including the Great blue herons, which nest on the islands of Cairngorm Lake. The Steel is one of the finest freestone steelhead rivers on the north shore. It has good flow throughout the year, with an average width of more than 50 feet.



One of the few north shore rivers never used for log drives, the Steel has deep pools and long riffles and rapids. An old road on the east side and heading south provides access to Henry's Pool and to the mouth entering Santoy Bay. On the west shore, a hiking trail leads north as the river transcends steep canyons and rugged bedrock terrain. Deep pools on the bends can hold steelhead all year. The Steel has more than 5.2 miles of steelhead water and is often fishable well into December.

To experience the Steel River, contact one of the local charters or outfitters in this document or contact the Terrace Bay Tourist Information Centre at 1-800-968-8616 or [tourism@terracebay.ca](mailto:tourism@terracebay.ca).

## TERRACE BAY BEACH



This huge sandy beach on Lake Superior offers delight to everyone, whether you like walking the beach, having a picnic, or taking a dip in Lake Superior's invigorating waters, there is something there for everyone.

If you want to get out onto Lake Superior, the beach has a boat launch for your convenience. The docking facilities can accommodate boats with a draft of three feet or less, and there is a ramp for launching boats up to 22 feet in length.

## TERRACE BAY LIGHTHOUSE & DOWNTOWN

Come check out the new \$3 million downtown revitalization project that includes a 50 foot lighthouse to climb and take in the majestic views of Lake Superior and the Town. The lighthouse is based on a replica of the one at the Slate Islands which is the tallest lighthouse on the Great Lakes. It has an authentic winding staircase leading to an observation deck with a coin operated viewing scope to see if you can pick out a caribou at the Slate Islands shores.

See the gorgeous landscaping and talk to the friendly shop owners before taking in a delicious meal at one of the local restaurants.



*Terrace Bay Lighthouse and Downtown  
Pictures from Lighthouse Deck*



## TRESTLE RIDGE SKI HILL

Trestle Ridge offers 5 ski runs ranging from beginner to intermediate-advanced, along with a half pipe for snowboarding. They offer a fully equipped rental shop including snowboards, with snowboard and ski lessons available. Canadian ski patrol is on duty and light snacks are available at the ski chalet. Call the Terrace Bay recreation department at (807) 825-3315 for further information and to confirm the status of the hill.



## WHITESAND LAKE



Whitesand Lake, located just ten minutes west of Schreiber along Highway 17, provides a pleasant swimming and picnic area. It boasts a sandy, well-maintained beach, picnic tables and play area. A swimming raft is anchored just off shore during the summer months. A boat launch is located a short distance further down the beach so there is easy access to good fishing for small mouth bass, lake trout and perch.



## REGIONAL EVENTS

### February

The “Peel Off Winter” Celebrations in Schreiber are held every February and are perfect for winter enthusiasts of all ages! Sledding and other sporting events are held.



### May

The Green Tradeshow is held annually with year's event being May 5, 2012. It features environmentally friendly ideas, products and services from regional businesses and groups. For more information, visit the website at [www.greentradeshow.ca](http://www.greentradeshow.ca)

### June

The Marathon Music Festival occurs in June and features entertaining events and activities all weekend long. It is a great weekend getaway for the entire family.

The Rosspoint Island Sea Kayak Symposium is scheduled for June 22-24, 2012 and involves kayaking events and instruction for all levels from beginner to expert. For more information, visit the website at [www.rossportsymposium.ca](http://www.rossportsymposium.ca).

### July



Canada Day celebrations in Terrace Bay are always popular with both residents and visitors. Highlights include fireworks, a beach party and a Canada Day ceremony. Don't miss all the family-friendly festivities that are held in the recreation complex!

Summerfest is held in Marathon the first 10 days in July and features a wide array of fun activities. For more information visit [www.marathonsummerfest.com](http://www.marathonsummerfest.com)

Lake Superior Day will be held on July 15, 2012 and features free activities like boating and kayaking and food and games for the whole family. For more information on the activities and festivities planned, visit [www.terracebay.ca/loday](http://www.terracebay.ca/loday).

Schreiber Heritage Days occurs every 3<sup>rd</sup> week in July, and the whole town comes out to celebrate its unique history. Events include town-wide yard sales, bocci tournaments, ball games, theme dinners, and a spectacular parade.

The Pays Plat Annual Pow Wow is held each July and is one of the main social gatherings on the reserve. Pays Plat is just 25 km west of Schreiber, and visitors will be treated to a fascinating experience. Events to see include booths, displays, drumming and dancing.

## August

The Terrace Bay Annual Drag Fest is the biggest motor sports event in Northwestern Ontario and will be held from August 3-5, 2012 at the Terrace Bay airport. Participants come from all over Canada and the United States to showcase their vehicles.



The Township of Terrace Bay swells to over 10,000 people with this event and visitors should definitely book their rooms in advance. Visit [www.superiorclassics.ca](http://www.superiorclassics.ca).

Red Rock's "Live from the Rock" Folk Festival is a three-day music and art festival with on-site camping, five stages, a family area and an artisan's village. Held in August, it is a celebration of community and the arts on the northern shore of Lake Superior.



The Lighthouse Street Festival will be held on Friday August 24, 2012 in downtown Terrace Bay and feature giant inflatable castles, games for kids and all ages, Dottie the Clown, a show and shine, beer gardens, business sidewalk sales and a street dance with DJ Mario from Santi Sounds. For more information, visit [www.terracebay.ca/festival](http://www.terracebay.ca/festival).

The Annual Neys Nostalgia Days are held each August in Neys Provincial Park, just west of Marathon. Past events have included a spirit campfire, games, a voyageur snack, a scavenger hunt and more! This is a fun-filled weekend that everyone will enjoy.

The Nipigon Blueberry Blast Festival is held during the long weekend in August and features various family events such as a parade, pancake breakfast, live entertainment, teddy bear picnic and of course, lots of blueberries.

## September

The annual Terrace Bay Fall Fair occurs in September and features numerous exhibitions including crafts, baking and artwork. There is something for everyone.

The Nipigon Fall Fishing Derby is not to be missed by fishing enthusiasts! It is held in September, and is the largest held derby on the North Shore. There is lots of fun and activities occurring all week long as well as prizes to be won.

## December

The Terrace Bay Old Fashioned Skating Party is now in its 15<sup>th</sup> year and is held at the local arena the first Thursday in December. Come out and enjoy an evening of old-time fun.

**For more information** on Terrace Bay, Schreiber, and Rosspoint events, please visit the regional community calendar at [www.terracebay.ca/events](http://www.terracebay.ca/events) or the other Municipal websites at: [www.nipigon.net](http://www.nipigon.net), [www.redrocktownship.com](http://www.redrocktownship.com), [www.marathon.ca](http://www.marathon.ca), and [www.manitouwadge.ca](http://www.manitouwadge.ca)

## AGUASABON CLUBHOUSE

Box 726, 7 Beach Road, Terrace Bay, Ontario, POT 2WO  
Telephone (807) 825-3844



### Food/Service

The Aguasabon Clubhouse offers a menu that includes basic foods like burgers, chicken fingers and fries. Signature salads, sandwiches and baked goods are also offered and breakfast is available all day. Menu changes are made every two years. The Aguasabon Clubhouse also provides catering services and is a licensed restaurant with a well-stocked bar. Also featured in the clubhouse is a section that sells snack foods like pop and chips.

### Environment

The Aguasabon Clubhouse is a seasonal restaurant and is open from May 1<sup>st</sup> to October 15<sup>th</sup>. It can comfortably seat 65 people inside the building and there is an outdoor balcony on which guests can enjoy a beautiful view overlooking the golf course and Lake Superior. For families with young children, booster seats can be provided. The restaurant can accommodate large groups up to 90 people. Although reservations are not necessary, it is a good idea to make them. The Aguasabon Clubhouse is a smoke-free building, although smoking is permitted on the balcony. The atmosphere is casual and relaxed.



## DRIFTERS RESTAURANT

Highway 17, Terrace Bay, Ontario, POT 2W0

Telephone: (807) 825-3226

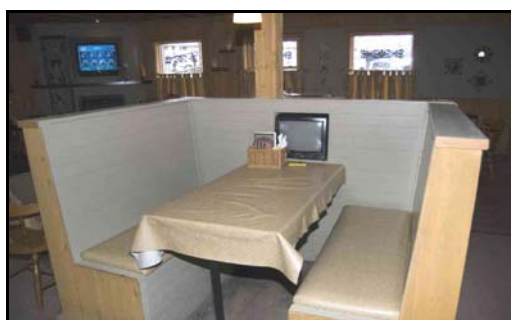


### Food/Services

Drifters Restaurant serves “Canadian cuisine” including the Roadhouse pasta, Drifters salad, homemade panzarottis and gnocchi. Daily specials are offered as are specials for holidays and other noteworthy events. Sunday brunch is served at 11:00 a.m. and is offered buffet-style. The food is home cooked and baked goods are available. In addition, to the regular menu, a separate children’s menu is offered. Reservations are not normally required, but are recommended for large groups and special occasions. Catering services are also available. Drifters is a licensed restaurant and has a well-stocked bar.

### Environment

Drifters Restaurant is open from 11 a.m. to 10 p.m. 75 people can be seated comfortably and large groups can be accommodated. The restaurant is also wheelchair accessible. For families with young children, booster seats and baby chairs are available. Drifters advertises “family dining,” in a smoke-free environment and can be described as either casual or formal. The food can best be described as “mmmm good!” To find information on Drifters Restaurant on the internet, check out the Imperial Motel website at [www.driftersimperialmotel.ca](http://www.driftersimperialmotel.ca).



## RED DOG INN AND RESTAURANT

Highway 17, Terrace Bay, Ontario, POT 2WO

Telephone (807) 825-3285



### Food/Services

The Red Dog Inn features both a licensed dining room as well as a Pizza Hut Express franchise. Specialties at the restaurant include the steak dinners and salad bar, prime rib, fresh pickerel and pasta dishes. Breakfast is also served and is available until 11:30. Seniors receive a discount when eating at the restaurant. In addition to the regular menu, Red Dog Inn Restaurant also provides a separate children's menu. The Pizza Hut outlet serves a selection of pizzas and take-out service is available. The restaurant also offers catering for functions and other special events.



### Environment

Red Dog Inn Restaurant is open year round.

80 people can be seated comfortably in a smoke-free environment. Large groups can be accommodated, and there are booster seats and baby chairs available for families with young children. The atmosphere at Red Dog Restaurant is casual and relaxed.

## ROY PIZZERIA & SUBS

7 Simcoe Plaza, Terrace Bay, Ontario, POT 2W0  
Telephone (807) 825-3500



### Food/Services

Specialties served at Roy Pizzeria & Subs include pizza, subs, broaster fried chicken, burgers, poutine, sandwiches, appetizers, salads, quesadillas, pastas, fish entrees, liver, meat, pies and pork chops. Breakfast, lunch and dinner are all offered at the restaurant. The food is also home cooked and baked goods are available for purchase.



Diners may eat in or take out their food and delivery services are provided. Also, the restaurant now offers a fun-filled evening of karaoke every Saturday night at 9:00 p.m. Everyone is welcome, although minors should be accompanied by an adult. Catering services and daily specials are also offered at Roy Pizzeria and special meals are offered during certain events. Reservations may be made a couple of days advance notice by telephone only.

### Environment

Roy Pizzeria is open from Monday to Saturday 10:00 a.m. to 10:30 p.m. and on Sundays from 4:00 p.m. to 8:00 p.m. However, in the summer months, the restaurant is closed on Sundays. Booster seats and baby chairs can be provided for families with young children. 58 people can be seated comfortably in Roy Pizzeria and the building is wheelchair accessible. The restaurant is smoke-free. The atmosphere at Roy Pizzeria may be described as casual and the restaurant provides family dining.

## SUBWAY

1151 Highway 17, Terrace Bay, Ontario, POT 2W0  
Telephone (807) 825-3304



### Food/Services

Subway serves a selection of sandwiches and subs, including breakfast sandwiches as well as salads, soups and cookies. The sub of the day is offered as a daily special and breakfast is available until 11:00 a.m. In addition to the regular menu, there is a separate children's menu offered at Subway. Catering services can also be provided.



### Environment

Subway is located within the Terrace Bay Shell station along with a convenience store. Hours of operation are from 8 a.m. to 10 p.m. Monday to Saturday and from 9 a.m. to 10 p.m. on Sunday. Meals can be taken out or eaten indoors and there are tables set up inside. The building can comfortably seat 24 people and can accommodate large groups, preferably with at least one day's notice. Booster seats and baby chairs are available for families with young children. The building is smoke-free. The atmosphere at Subway is casual and relaxed.

# SUPERIOR DINING

Jimmy and Sue Speziale

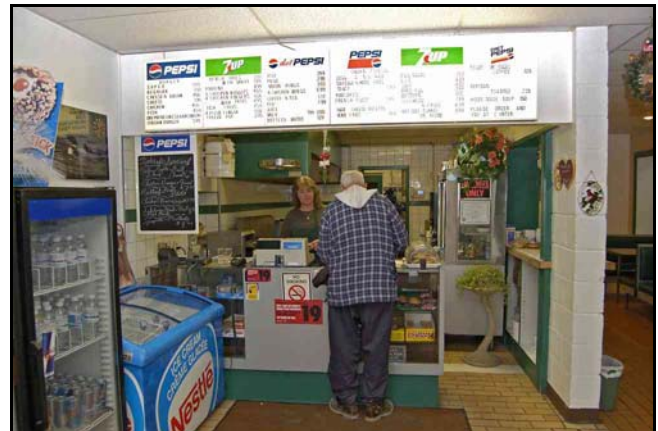
Mill Road, Highway 17, Terrace Bay, Ontario, POT 2W0

Telephone (807) 825 – 1539



## Food/Services

Specialties at Superior Dining include hamburgers, sausage burgers, soups, pastas, spaghetti and meatballs and fries. An all-day breakfast is served in addition to daily specials. Food is home cooked and baked goods are available as well. Catering services are also provided. Seniors receive a discount at Superior Dining and special meals are offered during holidays and other noteworthy events.



## Environment

Superior Dining is open 360 days a year from 6 a.m. to 10 p.m. 50 people can be comfortably seated inside and there is outdoor seating available. Large groups can be accommodated at the restaurant. For families with young children, booster seats and baby chairs are available. The atmosphere is casual and relaxed.





## TERRACE BAY BAKERY

33–A Simcoe Plaza, Terrace Bay, Ontario, POT 2W0  
Telephone (807) 825–9039



### Food/Services

The Terrace Bay Bakery serves a selection of homemade baked goods as well as hearty soups. Home cooked lunches and daily specials are available as is sliced pizza, and Thursday and Friday nights are “Pizza Nights.” Early risers can get breakfast from 6:30 a.m. to 11 a.m., and lunch is offered from 11:00 a.m. to 1:30 p.m. Noel’s catering is also available and can provide food such as 8 ft subs for events such as stags, dances and weddings. Terrace Bay Bakery is a walk-in restaurant and reservations are not needed.



### Environment

Terrace Bay Bakery is open from 6:30 a.m. to 4:30 p.m. Monday to Wednesday, 6:30 a.m. to 6:00 p.m. on Thursday and Friday “Pizza Nights” and from 7 to 11 a.m. on Saturday. It can comfortably seat 42 people in a smoke-free environment. Families with young children can receive smaller portions of dishes at a discounted price, and booster seats and baby chairs are provided. In addition, Terrace Bay Bakery has a wooden ramp available to provide easier wheelchair access. The atmosphere at Terrace Bay Bakery is casual and relaxed. The restaurant has received a lot of positive feedback from customers and was featured in the “Hats Off” section of the Terrace Bay-Schreiber News.

## WAH'S RESTAURANT

23 Simcoe Plaza, Terrace Bay, Ontario, POT 2W0

Telephone (807) 825-1881



### Food/Services

Wah's Restaurant serves Chinese cuisine including spring rolls, fried rice, assorted rib, mein, stir fry and spiced dishes, as well as Canadian cuisine such as burgers, sandwiches and fried foods. Diners can get breakfast, lunch or dinner at the restaurant, as well as a buffet that is available on Thursday and Sunday featuring foods such as egg rolls, rice, vegetable dishes and much more. Along with the buffet seniors can receive a discount on the buffet prices. Specials are offered both daily for lunch and dinner, holidays and other noteworthy events. A children's menu is provided for families with young children. Wah's is a licensed restaurant and features a wide selection of drinks including beers, rye, rum, Bailey's, Kahlua and vodka.



### Environment

Wah's Restaurant is open from 11 a.m. to 10 p.m. Monday to Friday, closed on Saturday, and open from 4 p.m. to 10 p.m. on Sunday. The restaurant seats 56 people upstairs and 50 people in the catering room downstairs. Reservations are recommended for the buffets on Thursdays and Sundays and for special occasions. Booster seats and baby chairs are available when needed and the building is wheelchair accessible. Wah's Restaurant is casual and provides family oriented, smoke-free dining.

## **KFC/PIZZA HUT/ROBIN'S DONUTS – VILLA BIANCA**

65 Highway 17, Schreiber, Ontario, POT 2SO

Telephone (807) 824-1111



### **Food/Service**

KFC, Pizza Hut Express and Robin's Donuts are located in the Villa Bianca Inn, off Highway 17 in Schreiber. The restaurants serve the traditional meals offered at the franchises, including chicken dishes, pizzas, soups, sandwiches and donuts.

### **Environment**

The restaurants are seasonal and are closed in the winter. Hours of operation are from 6:00 a.m. to 10:00 p.m. 50 people can be seated comfortably in the building, and there is an outdoor seating area with umbrellas where patrons may smoke. Booster seats and baby chairs are available for families with young children, and large groups can be accommodated. Reservations can be made at the restaurants, with 24 hours notice preferred. The restaurants are part of a larger facility which includes a 30 unit hotel and a gas bar.



**TWIN SPOT RESTAURANT**  
60 Kingsway, Schreiber, Ontario, POT 2SO  
Telephone (807) 824-3300



**Food/Services**

Specialties at Twin Spot Restaurant include pizza, hamburgers, chicken burgers and French fries. Breakfast, lunch and dinner are served and breakfast is available all day. There is also a selection of goodies for sale. The food is home cooked, and daily specials are sometimes offered in the winter months. Twin Spot also provides catering services for functions with less than 30 people.

**Environment**

The Twin Spot is open from 8 a.m. to 9:30 p.m. Monday to Saturday, and from 8 a.m. to noon and 7 p.m. to 9:30 p.m. on Sundays. The restaurant seats up to 24 people and booster seats and baby chairs are available. Families with young children are provided with colouring books, checkers and puzzles to keep the little ones busy. Twin Spot is wheelchair accessible and there is one picnic table outside for outdoor dining. It is a smoke-free environment. The atmosphere is casual and relaxed. The Twin Spot is also an agent for Greyhound Bus services and Superior Propane.

## VOYAGEUR RESTAURANT

28 Kingsway, Schreiber, Ontario, POT 2SO

Telephone (807) 824-2590



### Food/Services

The menu at the Voyageur Restaurant includes sandwiches, wraps, burgers, pizzas, delicious dinners and daily specials. Breakfast, lunch and dinner are served and the breakfast menu includes light fillers, side dishes, egg dishes, French toast and pancakes. Breakfast is served until noon. In addition to the regular menu, a separate children's menu is available. Buffet-style meals are also offered at certain times. A new "Bistro" style menu is now offered at the restaurant with old favourites and new ones. Catering services are offered and can be arranged with the manager. Senior citizens receive a 10% discount off regular prices. The Voyageur restaurant is licensed and has a well-stocked bar.

### Environment

The Voyageur Restaurant is part of larger complex which includes a motel, a convenience and gift shop and a gas bar and is a non-smoking environment. It is open from 6 a.m. to 10 p.m.; however, during the off-season, the kitchen may close at 8 p.m. The restaurant can comfortably seat 70 people and if given advance notice, the staff can accommodate large groups. Booster seats are available for families with young children. The atmosphere at the Voyageur Restaurant is casual and relaxed.



## SERENDIPITY GARDENS

Box 1, 8 Main Street, Rosspport, Ontario, POT 2RO  
Telephone (807) 824-2890



### Food/Services

Specialties at the Serendipity Gardens Café include beef, chicken, fish, seafood, prime rib (served on Fridays and Saturdays), pasta, spanakopita, soups, salads and desserts. Daily specials are often offered. Hours of operation are lunch hours from 11 a.m. to 5 p.m. and dinner hours from 5 p.m. to 9 p.m. Those guests looking for a little variety can be assured that menu changes are made twice a year. The café is fully licensed with a well-stocked bar and it provides catering services to groups of all sizes, from small business gatherings to large weddings.



### Environment

The Serendipity Gardens Cafe is open year round and the hours of operation are from 11 a.m. to 9 p.m. daily from May to mid-October and from 5 to 9 p.m. on Mondays and Tuesdays and 11 a.m. to 9 p.m. Wednesday to Sunday from mid-October to May. The Café seats 41 people inside and 41 people outside and guests have the option of sitting on an outdoor patio nestled in a garden setting. Reservations are recommended, especially for larger parties. Large groups up to 40 people can be accommodated with special arrangements. There are booster seats available for families with young children. Smoke-free environment. The atmosphere at Serendipity Gardens is casual and whimsical. Visitors are treated to an eclectic selection of music and they may view the works of local artists which are displayed around the café. For more information on the Serendipity Gardens Café, check out the website at [www.serendipitygardens.ca](http://www.serendipitygardens.ca).